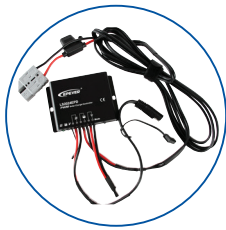


FOLDING SOLAR PANEL

- IP67 Waterproof regulator included
- Lightweight and flexible
- Portable folding panel
- Ideal power source for all kinds of camping and outdoor activities



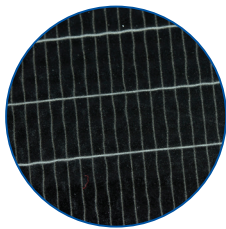
12V/24V Waterproof Solar Controller

- IP67 Waterproof rating
- Max 10Amp current output
- Max input voltage 50VDC
- High efficiency PWM charging
- Removable



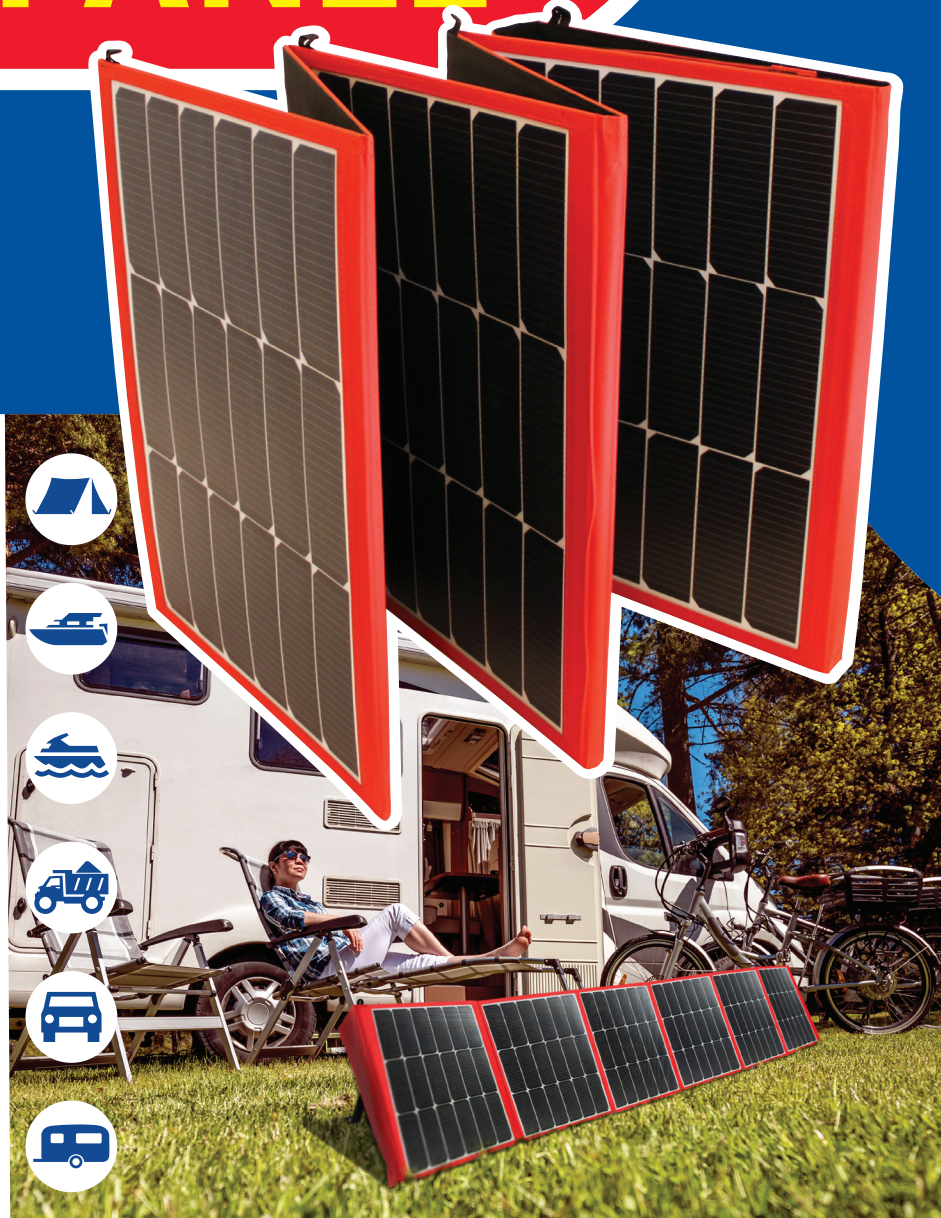
50 Amp Connectors

- High quality
- Easy to use
- Prevents reverse polarity issues
- Includes connector to charging alligator clips



High Efficiency Monocrystalline panels

- 20.1% sunlight conversion efficiency
- Semi-flexible design
- Lightweight
- Super-thin 5mm panels



CHARGE CONTROLLER SPECIFICATIONS

| | | | |
|-------------------------------|-------------------------|-----------------------------|-------------------------|
| Nominal System Voltage | 12V/24V DC Auto Select | Standby consumption (mA) | <4.58(12V) - <6.01(24V) |
| Max Solar input voltage (V) | 50 | Temp compensation | Yes |
| Rated Current (A) | 20 | Waterproof Rating | IP67 |
| Equalize Voltage (V) | 14.8 (12V) - 29.6 (24V) | Dimensions (mm) | 108.5 x 75 x 25.6 |
| Boost Voltage (V) | 14.4 (12V) - 28.8 (24V) | Mounting hole width (mm) | 100.5 |
| Float Voltage (V) | 13.7 (12V) - 27.4 (24V) | Mounting hole diameter (mm) | 5 |
| Low Input voltage cut-out (V) | 11.2 (12V) - 22.4 (24V) | Cable Dimension (mm2) | 6 |
| Low input voltage cut-in (V) | 12.6 (12V) - 25.2 (24V) | Weight (g) | 435 |

PANEL SPECIFICATIONS

| | | | |
|------------------------------|-----------------|--------------------------------------|-----------------|
| Cell Type | Monocrystalline | Dimension of panel (mm) | 515 x 395 x 5 |
| Panel Config. | 6 x 30W | Dimensions of full array open (mm) | 2400 x 510 x 60 |
| Peak Power (Pmax) | 180Wp | Dimensions of full array folded (mm) | 515 x 400 x 60 |
| Conversion Efficiency | 20.10% | Charging cable length (m) | 2.5 |
| Open circuit voltage Voc(V) | 22.8 | Weight (kg) | 5.9 |
| Max power voltage Vmp(V) | 19.4 | Cable Dimension (mm2) | 6 |
| Short Circuit Current Isc(A) | 10 | | |
| Max power current Imp(A) | 9.28 | | |