



www.a1batterypro.com.au



DC12-12

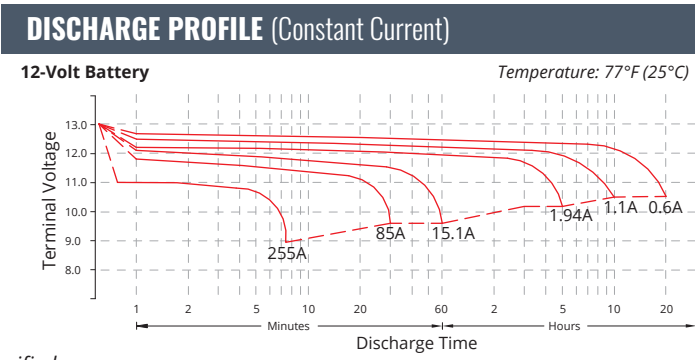
CYCLING CAPACITY	
20 Hour Rate	12 Amp Hours

RESERVE CAPACITY	
Reserve @25 AMPS	-
Reserve @75 AMPS	-

ELECTRICAL SPECIFICATIONS	
Nominal Voltage	12 Volt
C100	13.5
C20	12 AH
C10	11.2
C5	10.2 AH
C3	8.3 AH
C2	7.6 AH
C1	15 AH
Internal Resistance	14m Ω

MECHANICAL SPECIFICATIONS	
Group Size	-
Terminal Type	F1
Terminal Torque	See reverse side
Height (w/ terminal)	3.98" 101mm
Height (case only)	3.74" 95mm
Width	3.9" 99mm
Length	5.94" 151mm
Weight	9.26 lbs. 4.2 kg
Case Type	ABS Plastic - Flame Res. Rating UL94-HB

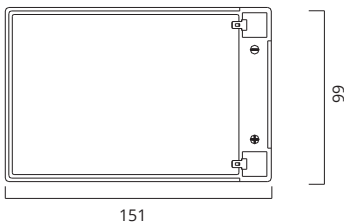
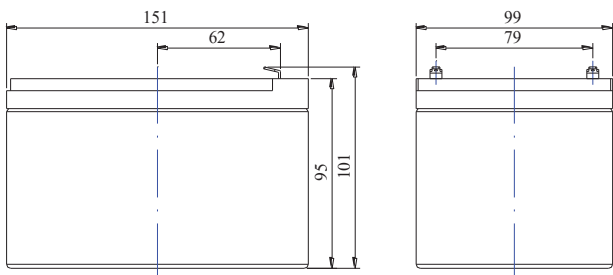
DISCHARGE TABLE (Constant Current)		
Time	Amps	Rate
20hr	0.6	0.05CA
10hr	1.1	0.10CA
8hr	1.32	0.13CA
5hr	1.94	0.20CA
3hr	2.75	0.33CA
2hr	3.8	0.50CA
1hr	15.1	1.00CA



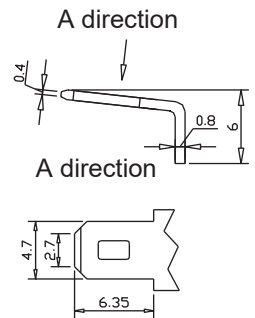
- All listed ratings are @ 100% SoC, T=77°F (25°C), 1.75VPC unless otherwise specified.

- Specifications listed are for estimation purposes only. Battery performance can vary depending on application. Battery design subject to change.

BATTERY & TERMINAL DIMENSIONS (All units shown in mm)



Terminal: F1

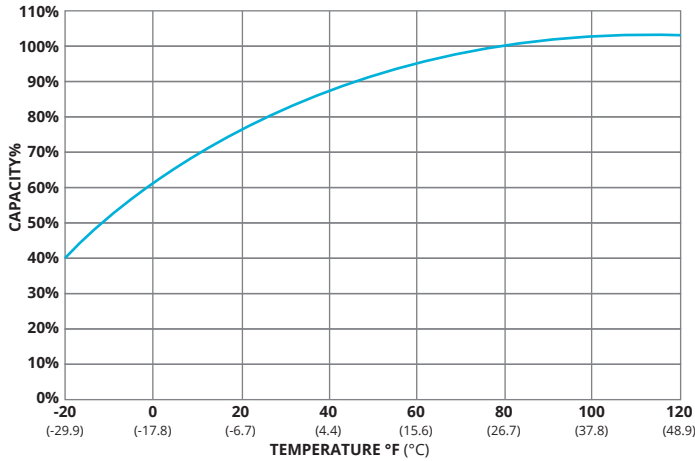


Two Great Stores to choose from...

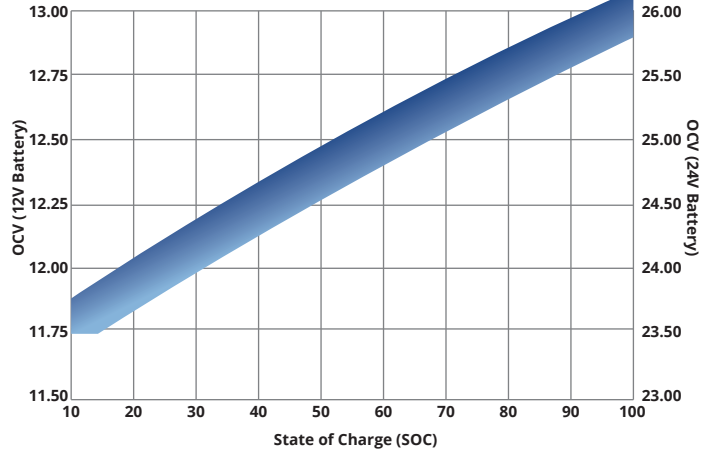
<p>7 Cemetery Rd, Mackay QLD 4740 Phone 07 4957 6123</p>	<p>Unit 16, 547 Woolcock St, Mt Louisa, Townsville QLD 4814 Phone 07 4774 7344</p>
--	--

PREMIUM DEEP CYCLE SERIES | DEEP CYCLE AGM

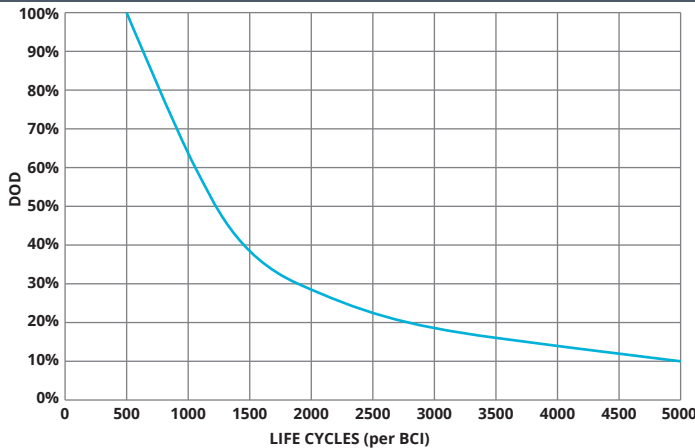
TEMPERATURE vs CAPACITY



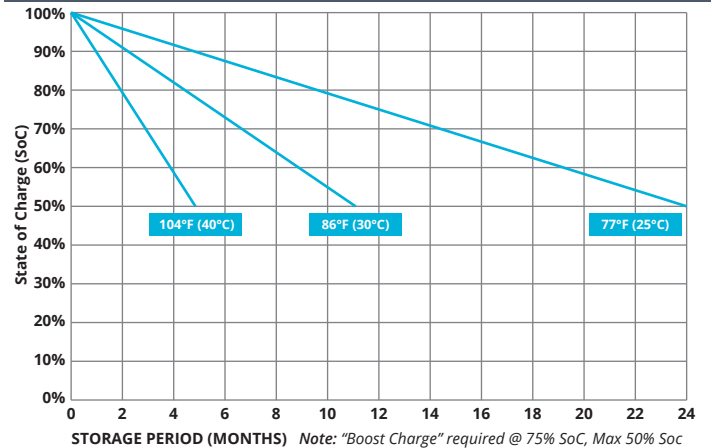
STATE of CHARGE (SOC) vs OPEN CIRCUIT VOLTAGE (OCV)



CYCLE LIFE vs DEPTH of DISCHARGE (DOD) *(Based on BCI Testing @ 2-hr Rate)



SELF DISCHARGE vs TIME/TEMPERATURE



TEMPERATURE RANGE SPECIFICATIONS

Condition	Recommended	Maximum	Recommended	Maximum
Storage	5°F to 122°F	-40°F to 160°F	-15°C to 50°C	-40°C to 71°C
Operation	5°F to 104°F	-40°F to 160°F	-15°C to 40°C	-40°C to 71°C
Charge with TC	5°F to 122°F	-40°F to 160°F	-15°C to 50°C	-40°C to 71°C
Charge w/o TC	32°F to 104°F	5°F to 122°F	0°C to 40°C	-15°C to 50°C

*TC= Temperature Compensation

CHARGE VOLTAGES

Charge Stage	Battery Voltages			
	12V	24V	36V	48V
Bulk	14.7V	29.4V	44.1V	58.8V
Absorption	14.7V	29.4V	44.1V	58.8V
Float	13.6V	27.2V	40.8V	54.6V

TC Factor: (-2mV/°F/cell) or (-4mV/°C/cell)

TERMINAL TORQUE SPECS (applicable values are highlighted)

M6	M8	M10	M6M (Stud)	M8M (Stud)	M10M (Stud) & 3/8" Stud	FR45	TP06 (AP)	TP08/TP68 (AP)	AP
3.3-4.8ft-lbs	5.2-6.7ft-lbs	8.1-10.3ft-lbs	2.6-3.7ft-lbs	4.4-5.9ft-lbs	7.4-8.8ft-lbs	4.8-6.3ft-lbs	2.6-3.3ft-lbs	4.6-6.3ft-lbs	4.2-5.8ft-lbs
40-57.5lbs-in	62-80lbs-in	97-124lbs-in	31-44lbs-in	53-71lbs-in	88.5-106lbs-in	57-75lbs-in	31-40lbs-in	55-75lbs-in	50-70lbs-in
4.5-6.5Nm	7-9Nm	11-14Nm	3.5-5Nm	6-8Nm	10-12Nm	6.5-8.5Nm	3.5-4.5Nm	6.2-8.5Nm	5.6-7.9Nm

Two Great Stores to choose from...

7 Cemetery Rd,
Mackay QLD 4740
Phone 07 4957 6123

Unit 16, 547 Woolcock St,
Mt Louisa, Townsville QLD 4814
Phone 07 4774 7344