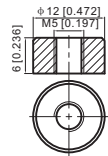
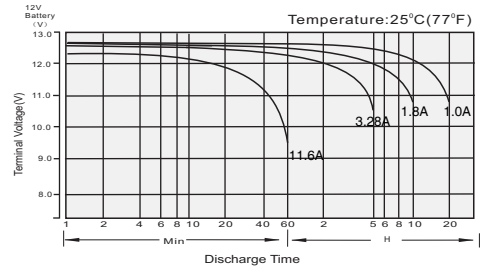
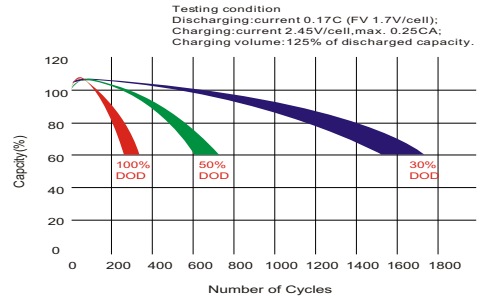

T12Terminal
Unit: mm [inches]

Specifications:

Model: ED12200	
Nominal Voltage	12V
Rated Capacity	
20 Hour Rate (1.0A to 10.8V)	20.0Ah
Hourly rate conversion capacity	
10 Hour Rate (1.80A to 10.8V)	18.0Ah
5 Hour Rate (3.28A to 10.5V)	16.4Ah
1 Hour Rate (12.9A to 9.6V)	11.6Ah
Dimension and Weight	
Length	181.5±2mm
Width	77±1mm
Height	166±2mm
Total Height	166±2mm
Weight	6.9Kg
Casing Material	ABS
Self discharge Rate (25°C)	≥91% /3 month
Internal Resistance	Fully charged Battery ≤ 15 mΩ
Operating Temperature Range	
Discharge	-15°C (5°F) ~ 50°C(122°F)
Charge	0 °C(32°F) ~ 40°C(104°F)
Storage	-15°C(5°F)~40°C(104°F)
Charging Methods	
Float Use	13.5V~13.8V(25°C), Compensation co-efficient-3mv/cell/°C
Cycle Use	14.7V~14.9V(25°C), Compensation co-efficient-5mv/cell/°C
Max Charge Current	0.25C(A)
Applications:	Electric vehicle, solar power, wind power, telecom systems, UPS, Medical, Toys

Discharge Characteristics

Cycle Life in Relation to Depth of Discharge


Two Great Stores to choose from...

7 Cemetery Rd, Mackay QLD 4740 Phone 07 4957 6123	Unit 16, 547 Woolcock St, Mt Louisa, Townsville QLD 4814 Phone 07 4774 7344
---	---