



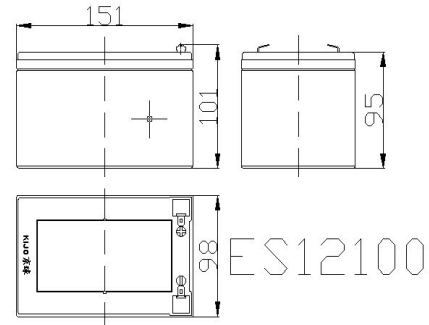
Batterypro

www.a1batterypro.com.au

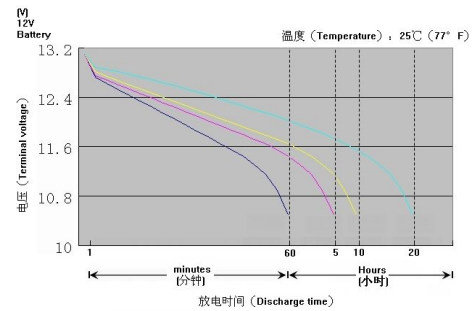
ES12100

Issue Date: 29/06/2015

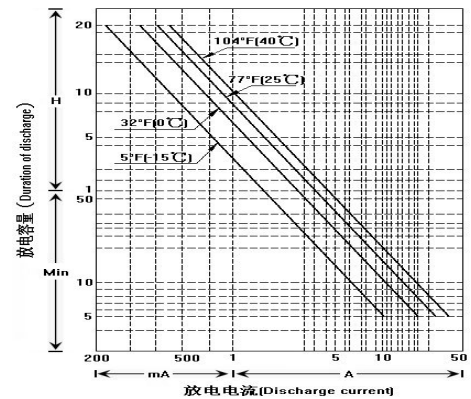
Predator
AGM BATTERIES



Discharge characteristics 77°F(25°C)



Duration of discharge VS discharge current



Specifications:	
Model: ES12100	
Nominal Voltage	12V
Rated Capacity	
20 Hour Rate (0.5A to 10.5V)	10Ah
Hourly rate conversion capacity	
1 Hour Rate (10A to 10.5V)	6Ah
5 Hour Rate (2A to 10.5V)	8.5Ah
10 Hour Rate (1A to 10.5V)	9.3Ah
20 Hour Rate (0.5A to 10.5V)	10Ah
Dimension and Weight	
Length	151±2mm
Width	98±2mm
Height	95±2mm
Total Height	101±2mm
Weight	2.8Kg
Shell	ABS
Self discharge Rate (20°C)	≥85%/3month
Internal Resistance	Fully charged Battery ≤10mΩ
Operating Temperature Ranger	
Discharge	-35°C(-31°F)~50°C(122°F)
Charge	-15°C(5°F)~40°C(104°F)
Storge	-15°C(5°F)~40°C(104°F)
Charging Methods	
Floating Use	13.5V~13.8V(25°C), Compensation co-efficient-3mv/cell/°C
Cycling Use	14.7V~14.9V(25°C), Compensation co-efficient-5mv/cell/°C
Max Charge Current	0.15C2(A)
Applications	Electric vehicle, solar power, wind power, telecom systems, UPS, toys

Two Great Stores to choose from...

7 Cemetery Rd,
Mackay QLD 4740

Phone 07 4957 6123

Unit 16, 547 Woolcock St,
Mt Louisa, Townsville QLD 4814

Phone 07 4774 7344