

SP-EN100W-24V
F 35mm
Mono Solar Panel

Key Features



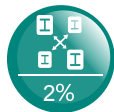
High Conversion Efficiency
 Module efficiency up to 14.65% achieved through advanced cell technology and manufacturing capabilities



Positive Tolerance
 Positive tolerance of up to -1%+~3% delivers higher output reliability



High PID Resistant
 Advanced cell technology and qualified materials lead to high PID resistant



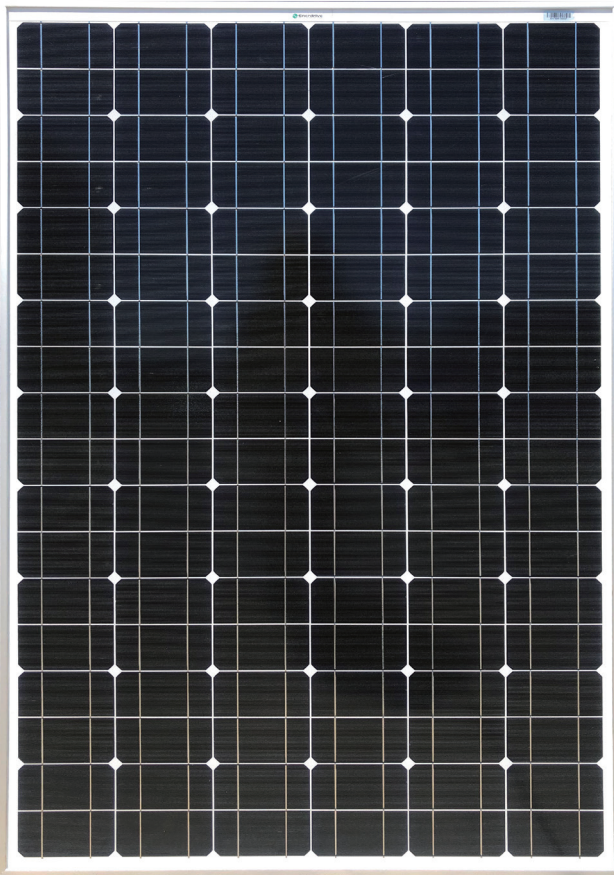
Current Sorting Process
 System output maximised by reducing mismatch losses up to 2% with modules sorted and packaged by amperage



Extended Wind and Snow
 Load tests
 Module certified to withstand extreme wind (2400 Pascal) and snow loads (5400 Pascal)



Withstanding Harsh Environment
 Reliable quality leads to a better sustainability even in harsh environments in the outdoors



Quality Guarantee

- * High efficiency solar cells, Low resistance loss and higher conversion efficiency
- * Double EL test before and after lamination, highly controls product defects
- * Solar panel classified by current, to improve system performance



www.a1batterypro.com.au



Certificates

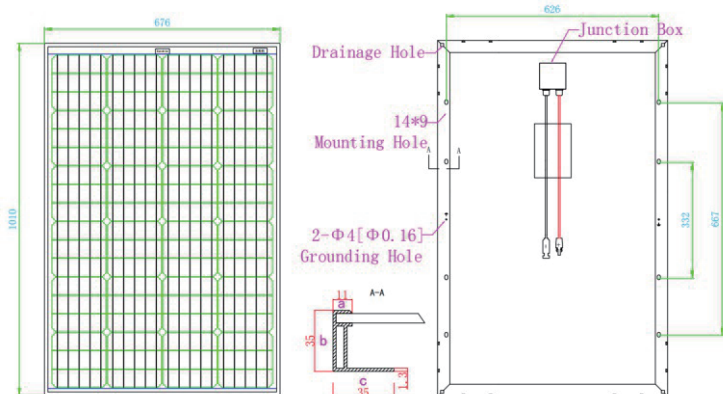
- * ISO9001:2015
- * ISO145001:2018
- * ISO45001:2018
- * CE;CQC;SGS;IN METRO;DEKRA

SP-EN100W-24V F 35mm Mono Solar Panel

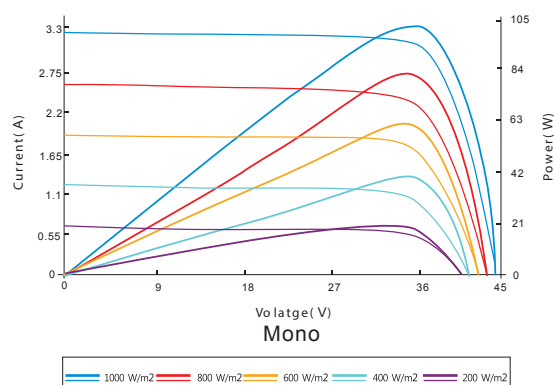
Electrical Characteristics

STC	SP-EN100W-24V
Maximum Power(Pmax)	100W
Optimum Operating Voltage(Vmp)	36.0V
Optimum Operating Current(Imp)	2.78A
Open Circuit Voltage(Voc)	43.4V
Short Circuit Current(Isc)	3.09A
Module Efficiency	14.65%
Operating Module Temperature	-40°C to +85°C
Maximum System Voltage	1000V DC (IEC)
Power Tolerance	-1%~+3%
STC	Irradiance 1000 W/m ² , module temperature 25°C, AM=1.5; Best in Class AAA solar simulator (IEC 60904-9) used

Engineering Drawing



I-V Curve



Excellent performance under weak light conditions: at an irradiation intensity of 800W/m² (AM 1.5, 25°C), 95.5% or higher of the STC efficiency(1000W/m²) is achieved.



Mechanical Characteristics

Solar Cell	Monocrystalline silicon 157mm×52mm
No. of Cells	72 (4×18)
Dimensions	1010x676x35mm
Weight	8.1kg
Front Glass	3.2mm(0.13 inches) tempered glass
Frame	Anodized aluminium alloy
Junction Box	Ip67 rated
Output Cables	TÜV (2Pfg1169:2007) 4.0 mm ² (0.006 inches ²), symmetrical lengths(-) 900mm and (+) 900 mm
Connectors	MC4 connectors

Temperature Characteristics

NOCT	45±2°C
Temperature Coefficient of Pmax	-0.37%/°C
Temperature Coefficient of Voc	-0.30%/°C
Temperature Coefficient of Isc	0.060%/°C

Packing Configuration (35mm)

Per Container (40' HQ)	1260Pieces
------------------------	------------

Two Great Stores to choose from...

7 Cemetery Rd,
Mackay QLD 4740
Phone 07 4957 6123

Unit 16, 547 Woolcock St,
Mt Louisa, Townsville QLD 4814
Phone 07 4774 7344