



## Technical Information

The Predator GC2-DT126-240 is an industrial deep cycle battery designed specifically for golf cart, scissor lift, floor scrubber and similar motive power applications.

This battery features enhanced SiO<sub>2</sub> – PVC Nano Grade separators for maximum performance and durability.

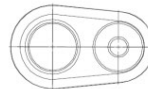
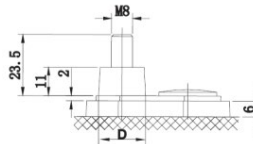
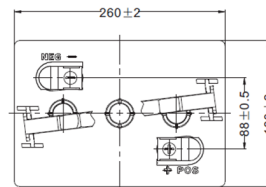
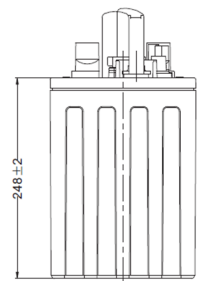
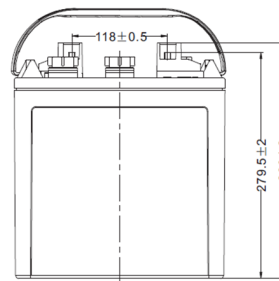
The proprietary design caps are have been developed to minimise water loss during use.

### Charging

Absorb Charge Voltage: 7.35-7.5V

Recommended Charge Current: 24A

Maximum Charge Current: 60A



Terminal		
D	Positive	19.5 <sup>0</sup> <sub>0.3</sub>
	Negative	17.9 <sup>0</sup> <sub>0.3</sub>

## Features & Benefits

- Thick plates for dimensional stability
- Optimised for high cycle motive applications
- Proprietary alloy and paste composition
- Cap design reduces water consumption
- High conductivity terminals

## Applications

Golf Carts

Scissor Lifts & Floor Scrubbers

Off Grid Power Storage

## Technical Specifications

<b>Battery Type</b>	Lead Antimony Deep Cycle	<b>Case Material / Colour</b>	Polypropylene / Black
<b>Voltage</b>	6V	<b>Lid Type / Colour</b>	Accessible / Black
<b>Capacity (20Hr / 5Hr)</b>	240Ah / 195Ah	<b>Plate Type</b>	Cast Grids
<b>Reserve Capacity (25A)</b>	485 minutes	<b>Separator Type</b>	SiO <sub>2</sub> – PVC Nano Grade
<b>Reserve Capacity (75A)</b>	130 minutes	<b>Assembly Layout</b>	Diagonal
		<b>Terminal Type</b>	DT - M8 (UTL)
<b>Overall Size (LxWxH)</b>	260 x 180 x 279.5mm	<b>Case Size</b>	BCI GC2
<b>Nominal Weight</b>	28.8kg	<b>Ledges</b>	None